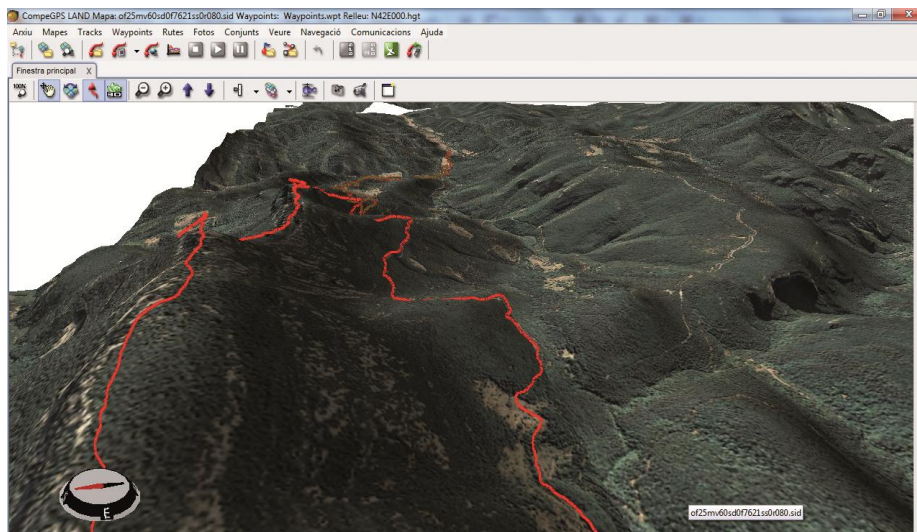


QUESTIONS AND ANSWERS

The last chapter of **CompeGPS Land** tutorials is devoted to resolve questions and doubts to various questions over these months.

This will be a quite easy and understandable tutorial, nevertheless if you have any further question, feel free to ask our support team to solve them:

- support.compegps.com
- +34 881 245 005
(0.09€ + 0.07€/min)



Updates

How I can know which CompeGPS Land version I have? Any new versión? How I can upgrade it?

When starting the software, a logo of CompeGPS Land will be displayed, the current versión will be displayed at the lower part. The user can also determine the version which is running using the 'Help' menu: press 'About'. Currently, the latest version of the software is 7.1.1 (Figure 1). If you need to update to the latest version of CompeGPS Land, all you have to do is update the software from the Data Tree. You


can do it by clicking the  icon, or on the other hand, from the View menu 'Data Tree'. Once you open the tree window, you only need to open Storage files. 'CompeGPS Land' option will be displayed. Press the right mouse button and choose Update Software Land. The update will start. A message will warn us when the update is completed.



Figure 1

Is it possible to update my GPS' TwoNav software from CompeGPS Land?

Yes you can. This action will be done using the same steps that we did in the last question. From Data tree we chose from Storage files, our GPS. Clicking

the right mouse button and choose the TwoNav software upgrade option. A small window will be opened inviting us to download the new version. Click Download (Figure 2). The process can take several minutes. A message will warn us when the update is completed.

Maps

What stands for a mosaic map? How I can work with them?

A mosaic map is a digital map made up of different parts, like a mosaic, each and every part forms the entire map. This system is very useful in order to get access to a specific area of the map without having to download or transfer the entire map. To work with mosaic maps the user will need an index map: the overview map.

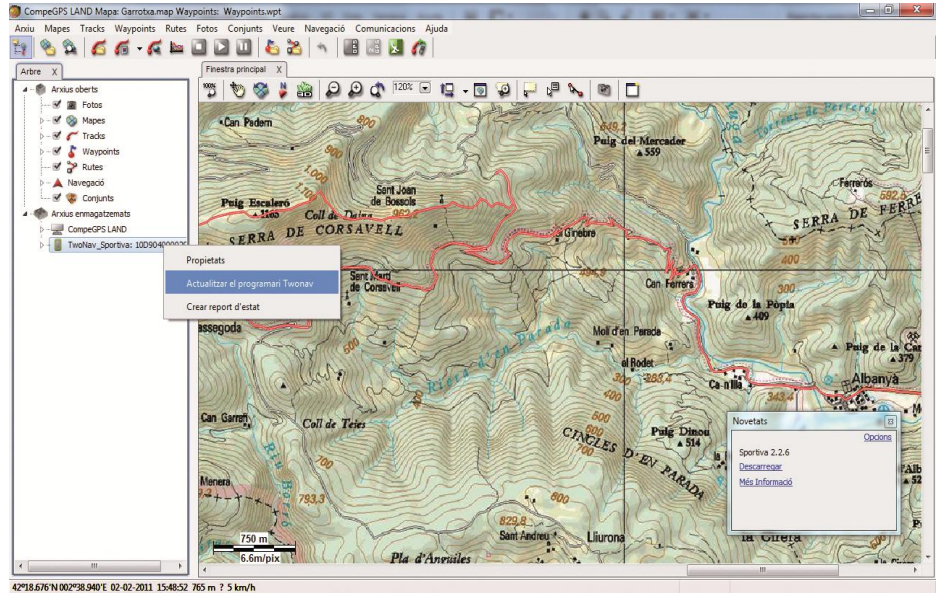


Figure 2

How I can transfer the maps that I use at CompeGPS Land to my GPS?

CompeGPS maps are normally visualized with digital or scanned images. They are actually maps made up of bits which must be transformed ("rasterized") in order to transfer them to the GPS device. So the first thing you have to do is save the map using the new format. To do this, having CompeGPS Land opened, click the map image with the right mouse button and choose Save map as. A new window will appear where you can type the name of the file and select the its format. The user has to choose the format CompeGPS RASTER map.

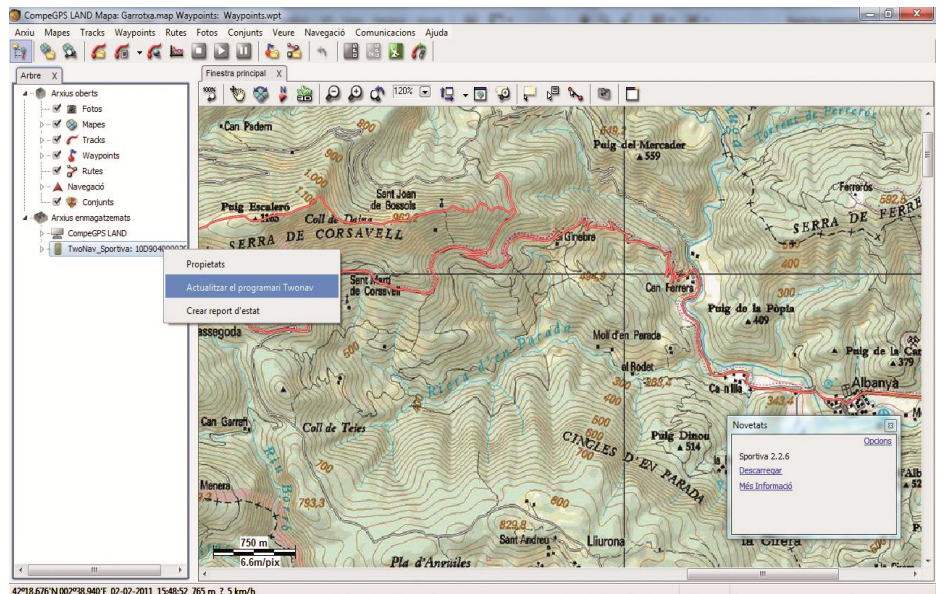


Figure 3

How I can see the frames of the maps that I have?

One of the functions of CompeGPS is the option to display the frames of the maps that have been stored on your computer, so the user can open the map that he needs with no need to load all of them. You should first fix the folder where the maps are saved. Second, fix the map frames that you want to view. These actions can be

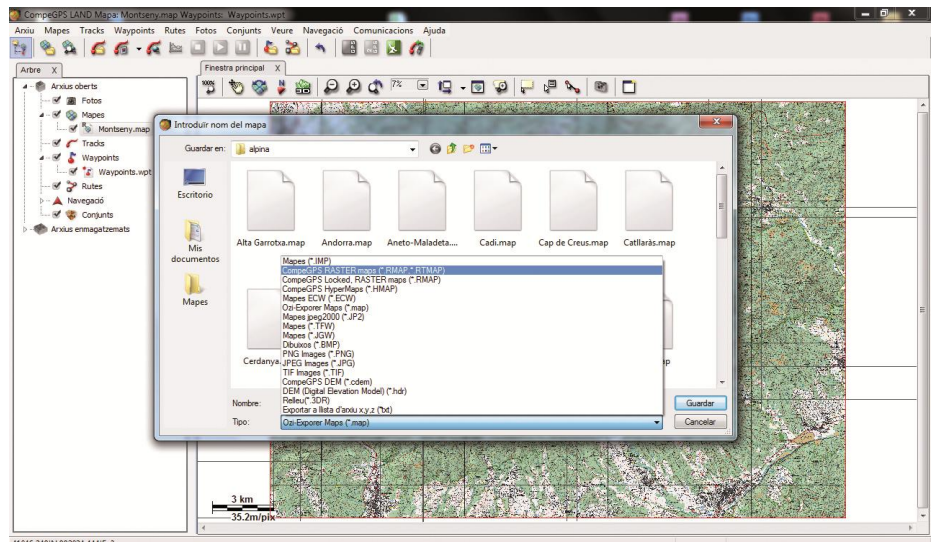


Figure 4

applied by doing a right click to the main screen of CompeGPS Land and choosing Select Active Maps Frames Folder. A browser window will help us locate it. If frames are bothering us, we can activate or deactivate by clicking View Maps Frameworks option from the menu.

I would like to publish my trips in my personal blog, using CompeGPS Land how I can get the map image with the track drawn?

Open the map and the desired track using CompeGPS Land. Click on the map with the right mouse click button and choose Edit option. From the menu that pops up, choose Save the image of the map with waypoints, tracks, etc. At the same window which appears you can also choose the name of the image and the placement where you will save it. The user can also choose the type of image and its format. In order to publish them on web we strongly recommend JPEG images (*.JPG).

The image will be saved and a new window will appear in order to save the calibrations and informations of the file that we just used.

Later on this file will be quite useful to open with Land the image. This file will not be needed for image publication on web.

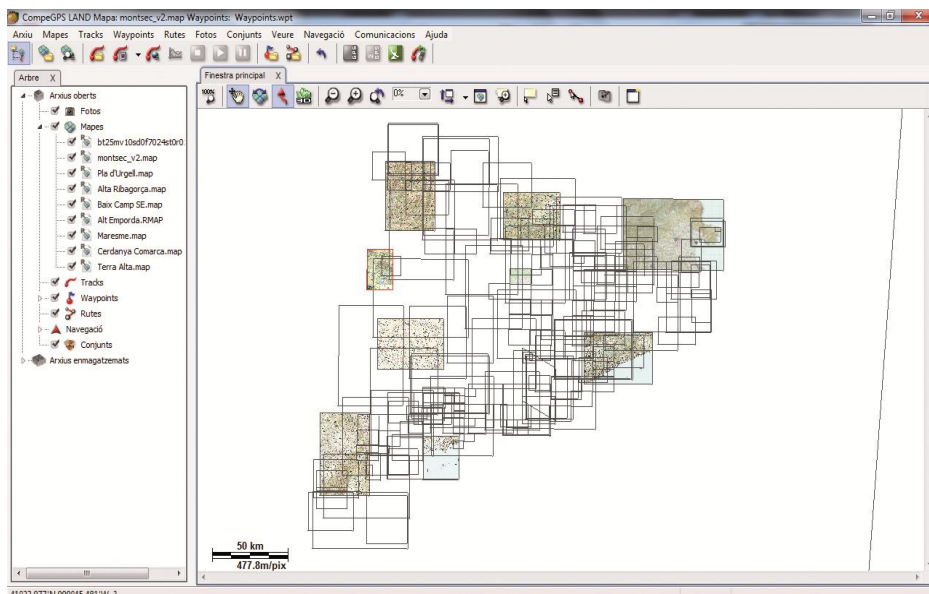


Figure 5

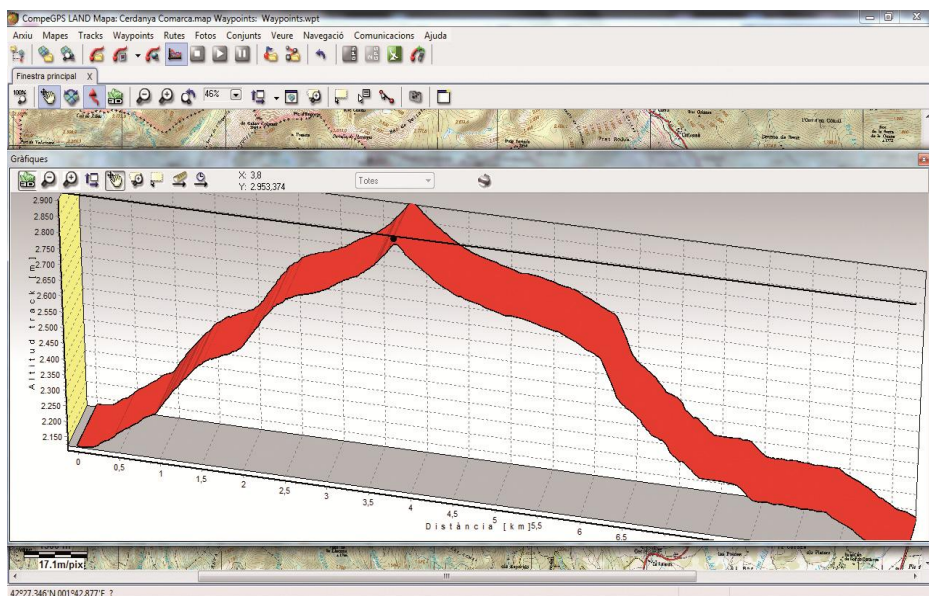


Figure 6

And... what about graphs?

To get the image of the graph, first of all, it has to be viewed on the screen, so once the track has been loaded to Land, do a click on the graphic icon or choose the menu View graph. If we click the right mouse button

on the graph, the user will see a menu in which the last option allows you to save the graph image. In this case only *.BMP format is allowed, any editor of images will allow you to change the format of the saved picture.