

# Get started

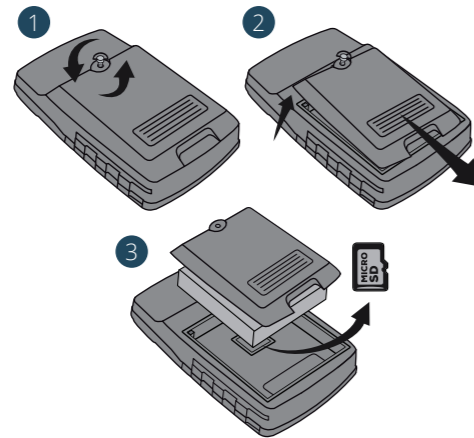
## Get to know your Aventura



Set up an account, download free maps and GO!

[os.uk/gpssetup](http://os.uk/gpssetup)

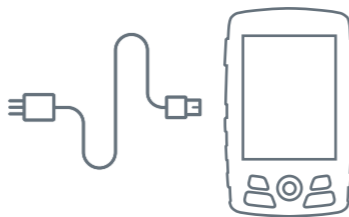
## Battery / Micro SD card



1. Open the battery cover.
2. Open the microSD card compartment and place the microSD card inside the compartment. Card's sticker must face the front side of the device. Close the microSD card compartment.
3. Place the battery back inside the compartment, positioning the battery contacts on top of the permanent connectors within the device.
4. Restore the battery cover.

## Initial boot-up

Charge the device by connecting it to the charger with the supplied USB cable.



When the unit is charged long press the **Power** button to turn it on.



It's important that you connect your device to your Wi-Fi network so it can automatically carry out two important processes:

- Update software
- Synchronize data

## Device layout

**Lock button:**  
Short press: Lock/Unlock GPS

**Map:**  
Press on the map to activate the tools

**Main menu:**  
Manage the files and settings on your device.

**Activity control:**  
Start, pause and finish an activity.

**Page button:**  
Short press: Show next data page  
Long press: Show main menu

**Back button:**  
Short press: 'Back' in menus/  
'Re-centre' in map  
Long press: Show map

**Status menu:**  
Press to check the status of the most frequently used features of the device (sensors, GPS...)

**Power button:**  
Long press: Turn GPS on / Turn GPS off

**Data bar:**  
Press to access the data pages

**Contextual menu:**  
Press to access options available for the current page

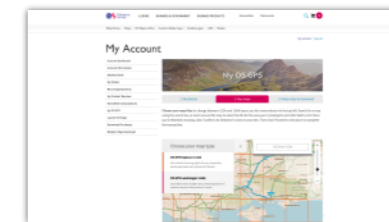
**ZOOM+ key:** Zoom in map

**ZOOM- key:** Zoom out map

**Joystick:**  
Move: Move map / menu  
Short press: Press to select

## Mapping

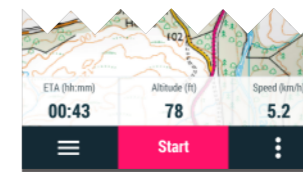
Choose map tiles for your device by going to your **My OS GPS** account in the OS Shop, clicking the **Buy maps** tab and following the on-screen instructions.



To access mapping on your device, press the icon (Menu > Maps) for the maps menu and select the tiles you want to display.

Return to the main screen to start navigation.

Press **Start** and select your activity to start navigation.



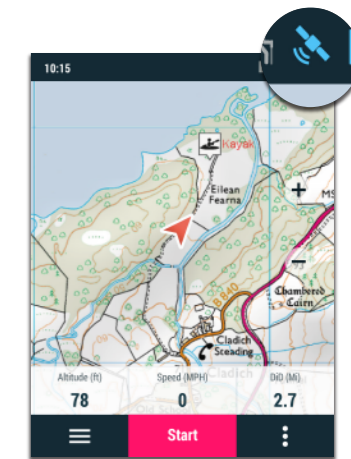
## Get going

It's important to make sure you have a good GPS signal before you start.


Stand outside in an open area to connect to as many satellites as possible.

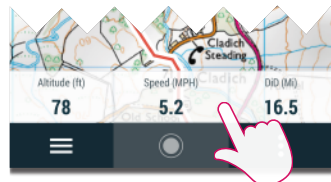
When the connection is ready, the icon will show as blue in the top menu.

Be patient as this can take a few minutes.



## More data

Press the  button or any data field on your map screen to see your data screens. The first shows your key route information.



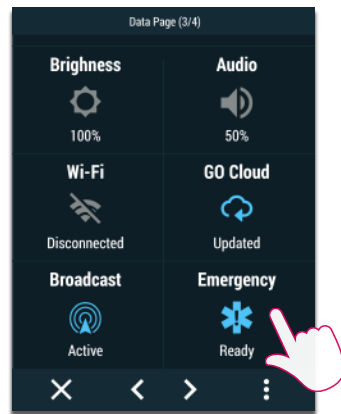
Scroll forward to access more detailed information.



## SeeMe

SeeMe's I.C.E. (In Case of Emergency) function will send an SMS and email to your emergency contacts from anywhere in the world if you get into trouble.

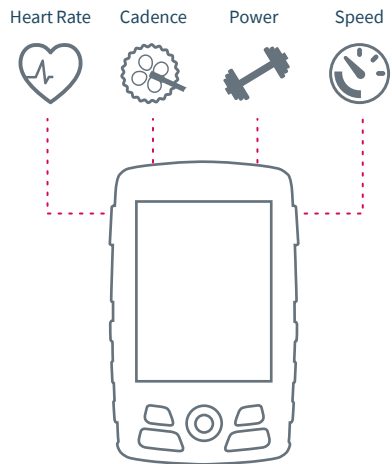
To access it, press the **Status menu** and hit the  icon.



With Live Tracking, your friends can track your trips in real-time by logging into GO. To set up **GO**, go to your **My OS GPS** account in the OS Shop, click on the **SeeMe** link (under My devices) and follow the on-screen instructions.

## Get even more from your GPS

You can use additional sensors to get more insight on your activities.

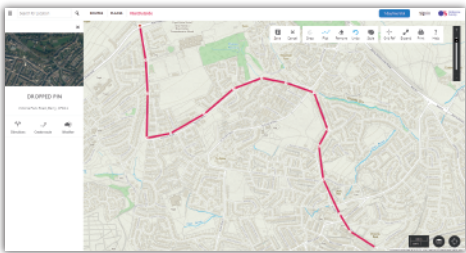


To see all OS accessories for your device, go to [os.uk/gpsaccessories](https://os.uk/gpsaccessories)

## Get your OS Maps subscription

Redeem your free 3-year subscription to OS Maps using the voucher code inside your box.

Use OS Maps to find inspiration and plot new routes on your desktop and mobile, then sync them with your GPS device. Plus, see GB in stunning 3D and find out what's around you with Augmented Reality.



To synchronise your OS Maps account with your device, go to **Settings** on the device, select **My Accounts** and enter your OS Maps details.

Then, whenever you create a new route and are connected to WIFI, your device will update shortly after with the new route.

## Support & warranty

Thank you for purchasing your Aventura from Ordnance Survey. Now that you've set up your device, you're ready to start adventures with a GPS device that gives you the freedom to go further.

For a full set of instructions, or if you've encountered any problems setting up your Aventura, the following support is available:

Full manual (PDF download)  
[os.uk/gpssupport](https://os.uk/gpssupport)

FAQs  
[os.uk/gpssupport](https://os.uk/gpssupport)

Ordnance Survey Customer Service Centre:

Phone  
**03454 560420**

Email  
[customerservices@osleisure.uk](mailto:customerservices@osleisure.uk)

Your Aventura comes with a 24 months manufacturer's warranty provided by COMPEGPS TEAM SL. For information about your warranty please visit our website:

[os.uk/gpssupport](https://os.uk/gpssupport)



Manufactured by:  
COMPEGPS TEAM SL  
Made in Spain

Powered by  
**TwoNav**

# Quick Guide

## Aventura

