



TwoNav
by CompeGPS



Sportiva +

Design

58 x 105 x 23 mm.
124 g. (with battery)
IPX6
3" transfective touchscreen
240x400 resolution

Instruments

ANT+™ technology
3D compass + Barometer
Chipset GPS SirfIII
Mini USB 2.0 connector
2GB internal flash memory
Micro SD reader (up to 32 GB)
1050 mA/h Li-ion battery (up to 8 hours in standard use)
CPU 400 Mhz

In the box

Topographic map: according to the selected pack (select zone/region/from 1 to 5 map tiles depending on the country)
Heart Rate Sensor
Cadence Sensor
USB PC Cable
Bike Mount + Cradle
Wall charger
- 50% discount to purchase CompeGPS Land 7



www.twonav.com - www.compegps.com



TwoNav GPS range welcomes a new model called “TwoNav Sportiva+”. Ideal for competitive cycling and mountain biking, it combines all the attractive features of TwoNav Sportiva adding ANT+™ technology to track wireless sensor statistics.

All your data reachable from a single button

As everything is customizable , with TwoNav software, “You rule!”.

Choose between more than 60 data (speed, distance, altitude, chronometer, etc.) the ones that really matter and display them on its intuitive touchscreen. Pulse on the left button to switch between 3 data pages.

Its barometer and 3D compass will do the rest by showing accumulated climb, ascent/descent data and compass.

City, mountain, or both

As everyone has his own manners and preferences, TwoNav gives you the opportunity to load all type/format of maps.

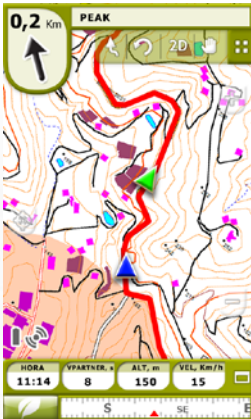
From Tele Atlas vector maps for Roabbike to topographic maps or satellite pictures (ICC,IGN,...), just pick the one you are most familiar with, ride it and record your track!

Alarm & Virtual coach

Take the chance to program a minimum and maximum value for each data field like the altitude, heart rate, deviation from route or distance for example. That’s the best way to optimize your trainings and better adjust your efforts.

To go even further, choose to challenge yourself by competing with your shadow. Simulate your last performance and get motivation by comparing it with your actual position.

Will you do better this time?



SPEED	DISTANCE
17,4 km/h	123 km
CHRONOMETER	TIME VPARTNER
01:03:15	10 s
TIME / DATE	HEART RATE
18:35 28/09/2010	105 bpm
%	ALTITUDE
35 %	235 m
<> MAP	

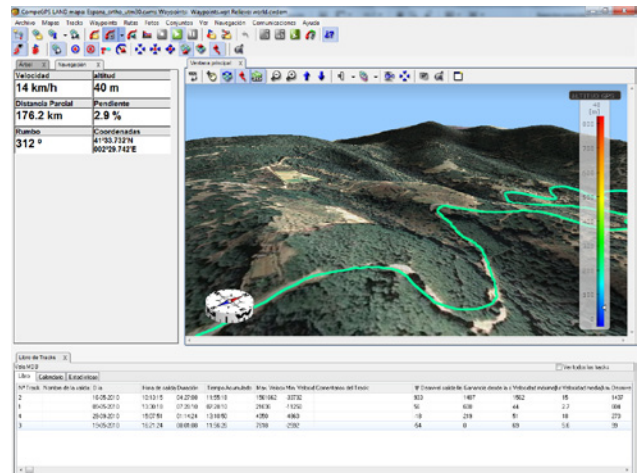
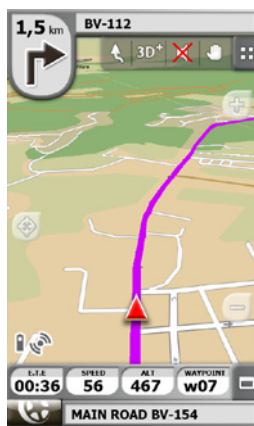
Virtual Coach

All the comfort of digital Roadbooks

If performance is the key word for some, others like to combine effort with beauty of the landscape. It's not always easy to look the multiple on-screen map and at the same time appreciate the view. That's why CompeGPS is always looking for some new way to improve user experiences.

From this aspiration came the digital roadbooks. Draw your track, add pictures and comments of tricky crossroads and send it to your GPS. When you get close to a crossroad, you will hear a bip and the screen will automatically get illuminated.

Start to fully enjoy your trips!



CompeGPS Land PC Software

Track, report and analyse on your PC

Through the powerful CompeGPS Land PC software, get all the tools you need:

- Store your tracks into a logbook to keep them organized in the best way:
 - Sort by calendar
 - Comparison of the most representative data (duration, distance, average speed, etc.).
 - Easy access to the track on the map
 - A temporary grouping of statistics to monitor data according to different periods (days, weeks, months or years)
- Properties of energy (energy and power, taking into account the weight of the user)
- A bunch of properties (distances, times, heights ...) & 'sensors' properties (average and maximum).
- Gradient Color of the track according to different values (Freq card., Speed, slope ...) to analyse quickly.
- Print a report of full your track (New CompeGPS Land 7.1)

An exclusive feature will also allow you to relive your trip in 3D video with live data.