

GEOCACHING

Geocaching is an outdoor activity consisting in hide and discover "treasures" using GPS devices. Classic treasures are placed inside boxes, usually *tupperware* boxes, hidden in specific locations by players from around the world. Coordinates for each treasure are published on specialized internet sites. In most of the cases, these boxes contain a guestbook to report each and every single visit, even gadgets might be found out as reward price for those who discovered the treasure.

Nowadays, more than 1.5 million treasures are hidden in over 100 countries. Since TwoNav 2.2 version, our software offers all necessary tools for geocaching activities (read *.GPX files containing coordinates, notes, confessions to be shared with community members on the net...).

Get the exact coordinates

www.geocaching.com is the largest and most active community for this activity. The vast majority of treasures are available for the users, however many options are reserved for *premium members* (\$30/year). There are other free alternatives, such as www.terracaching.com or www.opencaching.com among others. At these sites the user will find all the needed information to start searching caches.

In our example, we have used www.geocaching.com platform and have chosen 'Toulouse' as search option. From the list of available caches, 'Coeur de ville'



was selected. Afterwards, the *.GPX file was downloaded by clicking at 'GPX file' button. Once downloaded this file will guide the user to the right location of the cache.

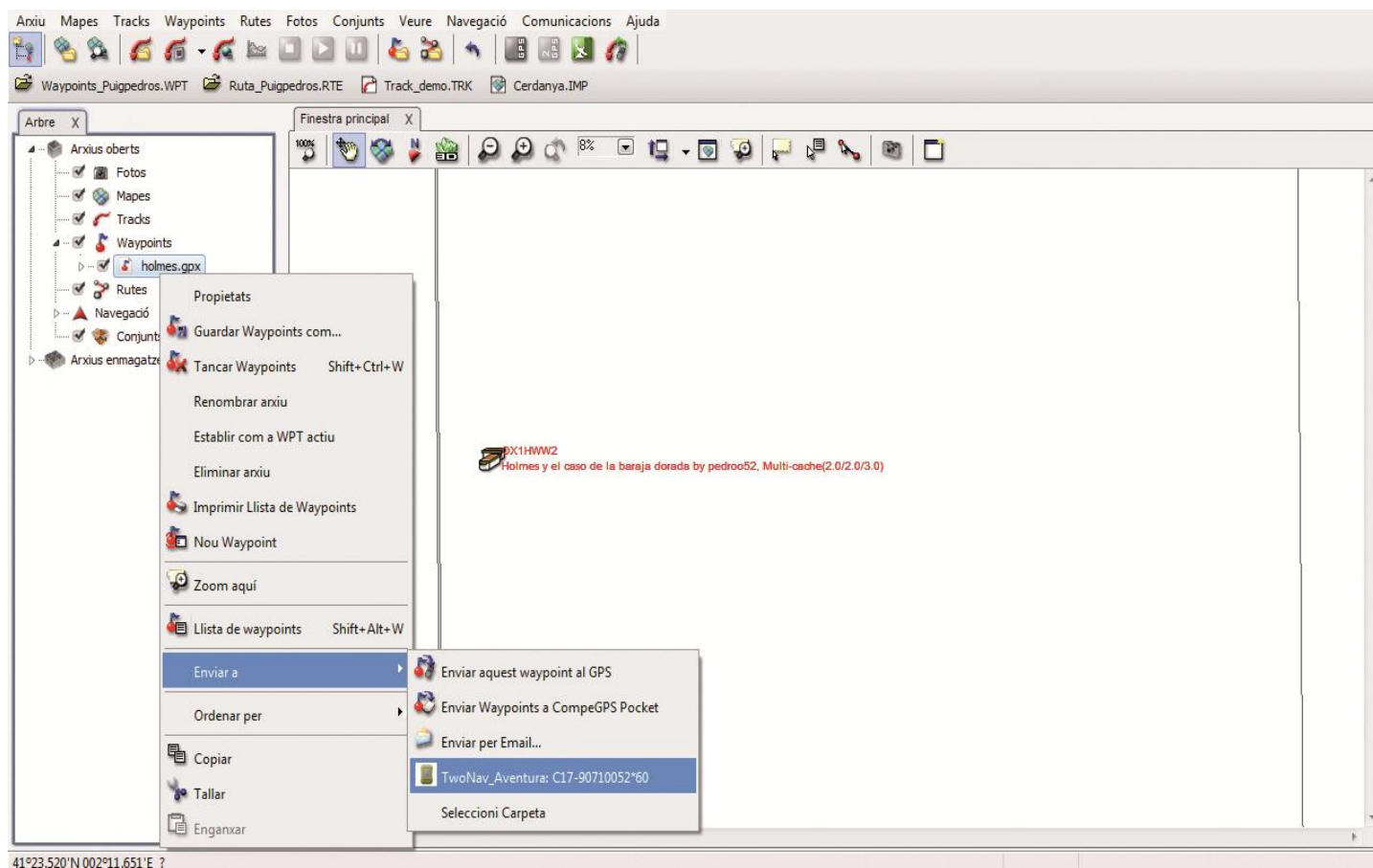
Data transfer to the GPS

The easiest way to send data to TwoNav devices (Smartphones, GPS, Tablet...) use Land software available for PC/Mac. For those users who might not



have the software, CompeGPS offers the opportunity to download a free trial version from www.compegps.com.

In order to start transferring data, the user have to open the *.GPX file using Land ('File > Open > Waypoint'). From the data tree, the file will appear under 'Waypoint' in 'Open files' section, do a right-click on it and select 'Send to' and then the right TwoNav device (Aventura, Sportiva, Sportiva+, Delta, Tablet, Pocket, iPhone, iPad, etc...).



Geocaching menu

All tools needed to practice geocaching are available from a 'Geocaching' menu, accessible from the 'Main Menu > Discover'. In order to navigate a cache we must select it and click 'Navigate'.

Once the cache is selected on the list, it will be possible to access to other file options:

General

Describes the general characteristics of the cache (name, description, etc,...).

Description

Provides a more detailed explanation of the cache and other information as well as recommendations reported by the author.

Encoded clues

This option offers an additional hint to find the cache that the user is currently looking for (this can be a text or an image). Even a sound or an additional picture can be associated to a cache.

Associations

Associated files can be played manually as well as

automatically when approaching to the specific location of the cache. In case of automatic association, if an image has been associated to a cache, it will be displayed on the screen when getting closer to it. Alarms can be set from the 'Main Menu > Settings > Navigation > Alarms > Waypoint'.

Notes

Allows the user to read notes posted by author. Self-created notes can also be checked.

Note: Found as well as non-found treasures can be tagged in order to remember the current status of the cache.